

STEEL SPECIFICATION

Granite® HDX

High levels of durability and colour stability for extreme environments



ArcelorMittal

Granite® HDX is manufactured to perform, endure and remain colour stable and attractive even in the coldest of northern climates or the most sun-drenched of southern countries.

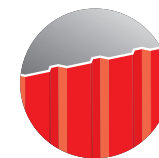
- extended performance lifetime, supported by a guarantee of up to 30 years
- aesthetic colour palette and metallic shades with outstanding colour and gloss retention
- robust metallic substrate (Z225 to Z275 or equivalent) for high corrosion resistance and cut-edge protection
- grained product for surface hardness and excellent robustness for handling and processing



Granite® HDX



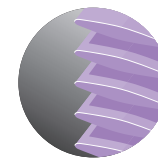
Sandwich panels



Profiled sheets



Cassettes and flat panels



Solar shading



Fins, Blades and narrow elements

Granite® HDX organic coated steel is a tough, but highly attractive and versatile product that will help the full spectrum of external construction projects look better and last longer.

In fact, we guarantee it - for up to 30 years.

Guaranteed enduring aesthetics - even in the coldest, sunniest and warmest climates, this is a coated steel that lasts - beautifully.



Project: Werkgebouw Post Zuid, Apeldoorn, Netherlands Architects: © Courage architecten and Mies architectuur Photography: © Ian Beck



Project: Stoas Vilentum Hogeschool, Wageningen, Netherlands System supplier: ZND Nedicom in cooperation with Jack Muller B.V. Architects: © BDG Architecten Ingenieurs Zwolle Photography: © Dirk Verwoerd



Applications

Granite® HDX is ideal for roofing and external facades and is more than capable of dealing with harsh, cold northern and sunny southern climates and environments, including:

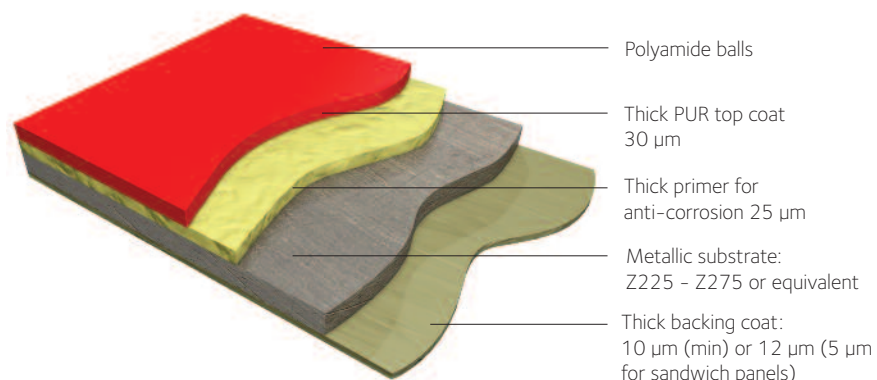
- Cold and wet environments
- Coastal regions (as close as 300 m to the sea)
- Sunny regions with strong UV radiation, such as Africa, The Middle East or The Caribbean
- Industrial and polluted areas

Granite® HDX can be formed into sandwich panels, cassettes, profiled sheets, solar shading elements and fins, blades or other narrow profile elements.

Aesthetics

ArcelorMittal's Granite® HDX is available in a rich diversity of colours - one of the outstanding advantages of organic coated steel. To help you make your choice, ArcelorMittal offers a wide range of colours to suit your project. Other colours are available on request.

All Granite® HDX colours have a grained, satin finish with 30 GU (gloss unit - Gardner 60°) but are also available in matt. When ordering metallic colours, clients should always place an order for the whole building at the same time, or at least for a whole facade. It is also essential to ensure that the material is mounted the right way up.



Performance

High UV and corrosion resistance, very good colour stability, robust surface coating, suitable for buildings exposed to harsh climatic or environmental conditions.

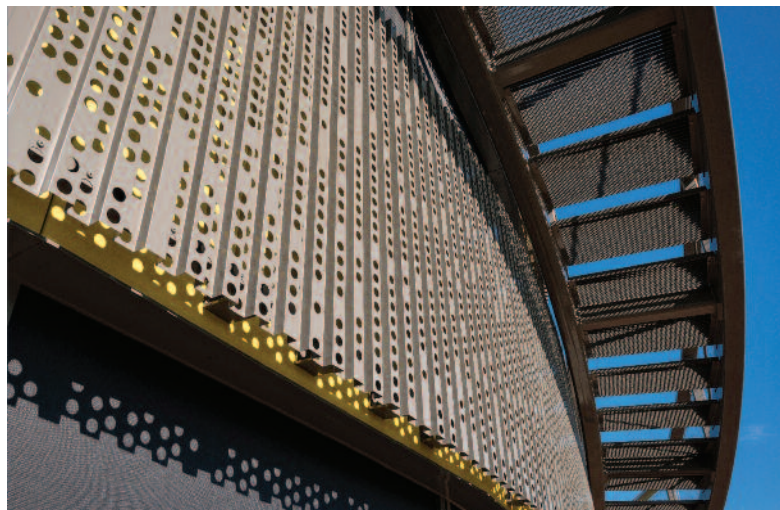
To ensure the best, most consistent quality of Granite® HDX, line products are regularly tested and subjected to outdoor exposure by independently certified bodies.

Technical data

Thickness	0.37 to 2.0 mm
Width	660 mm to 1500 mm (dependent on thickness)
Paint coating thickness	55 µm
Metallic coating	Z225-Z275 (or equivalent)
UV resistance	RUV4
Corrosion resistance	RC5
Fire performance	European standard (EN 13501-1) A1 French standard (FD P92-507) M0 British standard (BS 476) AA
Guarantee	Up to 30 years

Full technical details are available online. Scan the QR code on the back cover.





Project: Stoas Vilentum Hogeschool, Wageningen, Netherlands System supplier: ZND Nedicom in cooperation with Jack Muller B.V. Architects: © BDG Architecten Ingenieurs Zwolle Photography: © Dirk Verwoerd



Automatic guarantees

Why choose Granite® HDX?

- Automatic guarantee, no administrative formalities
- Guaranteed up to 30 years
- Guaranteed up to 15 years as from 300 m from the coastline

Our automatic guarantees are offered in many countries in Western and Eastern Europe, as shown above. For other geographical zones, guarantees may be granted as well – do not hesitate to contact ArcelorMittal.

These guarantees don't require completion of a lengthy questionnaire. According to product type and location, a guarantee will automatically be assigned to the beneficiary.

The very robust paint coating system that Granite® HDX features offers guarantees of up to 30 years.

In extreme environments, even down to as little as 300 m from the coastline, Granite® HDX is guaranteed for up to 15 years. In regions of intense sunlight, guarantees are for up to 15 years.

For analysis of your specific area and requirements, please don't hesitate to contact ArcelorMittal.



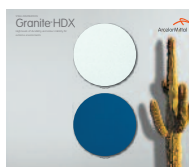
Project: 'Upside Down House', Hermosa Beach, California Architect: © Robert Nebolon Architects, San Francisco Photographer: © David Duncan Livingston



How to specify this material

Organic coated steel for severe environmental conditions with RC5 corrosion resistance class, paint coating thickness 55 µm and fire performance A1 (Granite® HDX by ArcelorMittal or equivalent).

See also
sample card
Steel Inspiration



Find out more about
Granite® HDX



We are here to help you

There is a wide range of online information available to help you discover more about our products and find solutions for your specific projects.

Visit industry.arcelormittal.com/steelenvelope to:

1. Order samples

You can order A4 samples directly from our website.

2. Find a building system manufacturer

Locate the Building System Manufacturer that best fits your needs.

3. Find technical data and detailed catalogues

Access the full range of ArcelorMittal brochures, catalogues and technical data.

Design and Technical support

We want to develop a dialogue with you, so for anything you can't find above or for comprehensive technical support, please e-mail our Customer Technical Support team.

steel.envelope@arcelormittal.com

Cover large image: Project: Soweto Theatre, South Africa Architect: © Afritects, Clara Cruz-Almeida, Tatenda Mavunga, Sergio Duarte, Tony de Oliveira Photography: © Tony de Oliveira

Smaller images, from left: 1 Project: Porsche Centre, Groningen, Netherlands Architect: VBJ Architectuur Cladding system: SBC HollandGroep Photography: © Mark Sekuur, Prima Focus 2 Project: Social housing units in Salburúa, Spain Architect: © ACXT Photography: © Aitor Ortiz 3 Project: University of Waterloo, Ontario, Canada Architect: © Akitt, Swanson & Pearce Architects Photography: © Joe Bevan. Courtesy of Steel Design Publication, Fall 2012

The information provided in this document is purely commercial and does not have any contractual value. Therefore ArcelorMittal rejects any liability regarding the information contained in this document. For the official ArcelorMittal guarantees, please refer to industry.arcelormittal.com/buildingguarantees

Copyright

All rights reserved. No part of this publication may be reproduced in any form or by any means whatsoever, without prior written permission from ArcelorMittal. Care has been taken to ensure that the information in this publication is accurate, but this information is not contractual. Therefore ArcelorMittal and any other ArcelorMittal Group company do not accept any liability for errors or omissions or any information that is found to be misleading. As this document may be subject to change at any time, please consult the latest information at the websites below.

industry.arcelormittal.com/steelenvelope
constructalia.arcelormittal.com